

# KARTA KATALOGOWA

CATALOG CARD / DATENBLATT

## PROFIL SKYLINE NAKŁADANY - do frontów bezuchwytowych z możliwością montażu taśmy LED

SKYLINE PROFILE - APPLIED - to the board for handleless fronts with the possibility of mounting LED strips  
AUFBAUPROFIL SKYLINE - für grifflose Fronten mit Montagemöglichkeit von LED-Streifen

### Kolor profilu:

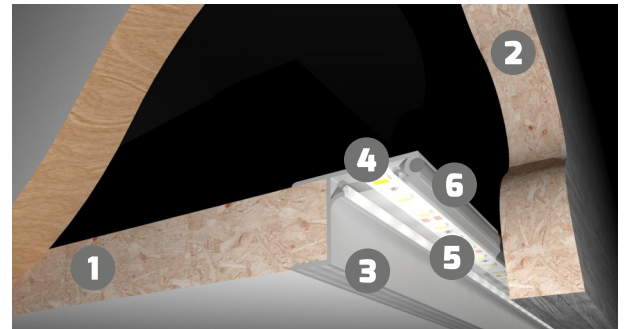
Profile color / Profilfarbe

### Czarny

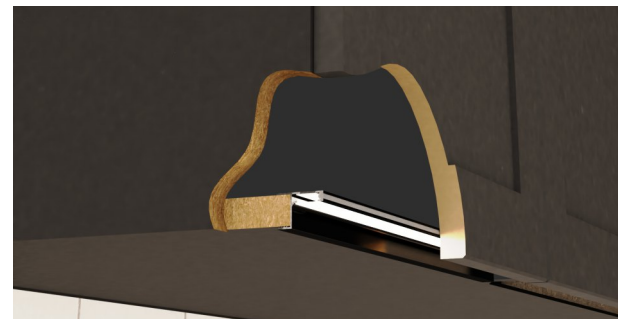
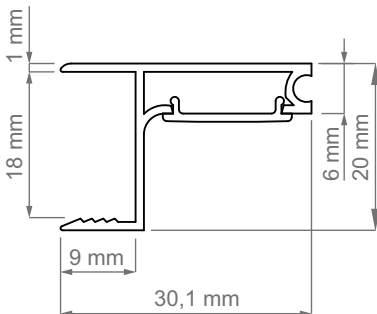
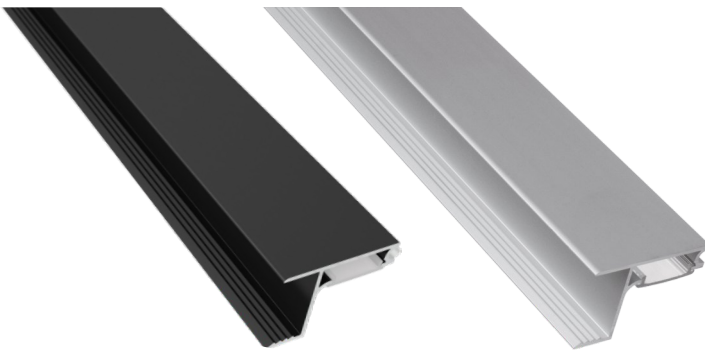
Black / Schwarz

### Aluminium

Aluminum / Aluminium



- 1** PŁYTA MEBLOWA WIENIEC DOLNY SZAFKI  
FURNITURE BOARD BOTTOM PANEL OF THE CABINET  
MÖBELPLATTE BODENPLATTE DES KLEIDERSCHRANKS
- 2** FRONT BEZUCHWYTOWY SZAFKI  
HANDLELESS FRONT OF THE CABINET  
SCHRANKFRONT GRIFFLOS
- 3** PROFIL  
PROFILE / PROFIL
- 4** TAŚMA LED  
LED STRIP / LED-STREIFEN
- 5** KLOSZ  
PROFILE DIFFUSER / ABDECKUNG
- 6** DYSTANS (WAŁEK GUMOWY)  
DISTANCE [RUBBER ROLLER] / ABSTAND (GUMMIROLLE)



Indeks Index / Artikelnummer	Kod EAN Code EAN / EAN-Code	Kolor colour / Farbe	Klosz Cover / Abdeckung	Długość profilu Profile length / Profillänge
PROFIL-SKYLINE-N-OP-3M-C	5908293410023	<b>Czarny</b> Black / Schwarz	<b>Opal</b>	<b>3 m</b>
PROFIL-SKYLINE-N-TR-3M-C	5900652149186	<b>Czarny</b> Black / Schwarz	<b>Transparentny</b> Transparent / Transparent	<b>3 m</b>
PROFIL-SKYLINE-N-OP-3M-W	5900652149179	<b>Aluminium</b> Aluminum / Aluminium	<b>Opal</b>	<b>3 m</b>
PROFIL-SKYLINE-N-TR-3M-W	5908293410047	<b>Aluminium</b> Aluminum / Aluminium	<b>Transparentny</b> Transparent / Transparent	<b>3 m</b>
PROFIL-SKYLINE-N-OP-2M-C	5908293410016	<b>Czarny</b> Black / Schwarz	<b>Opal</b>	<b>2 m</b>
PROFIL-SKYLINE-N-TR-2M-C	5908293410030	<b>Czarny</b> Black / Schwarz	<b>Transparentny</b> Transparent / Transparent	<b>2 m</b>
PROFIL-SKYLINE-N-OP-2M-W	5900652149155	<b>Aluminium</b> Aluminum / Aluminium	<b>Opal</b>	<b>2 m</b>
PROFIL-SKYLINE-N-TR-2M-W	5900652149162	<b>Aluminium</b> Aluminum / Aluminium	<b>Transparentny</b> Transparent / Transparent	<b>2 m</b>