

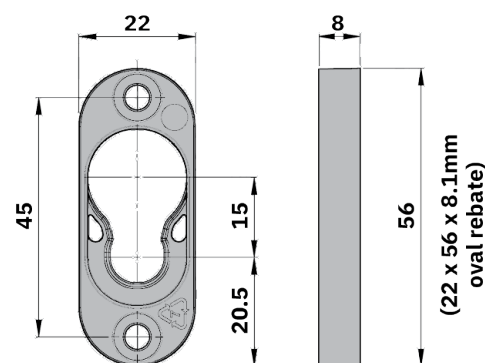
## Declaration of Performance

# Type 1 Flush

Button-fix product codes	171-018-11 (100 pack) 171-018-12 (12 pack)
EAN barcodes	5060740150071 (100 pack) 5060740150125 (12 pack)
Component drawing numbers	171-018-1C (Fix housing) 171-002-1C (Button)
Supplier	Buttonfix Limited Unit A, 1 Britton Street, London EC1M 5NW, UK
EU Authorised Representative	AR Experts, P.O. Box 5047, 3620 AA Breukelen, The Netherlands
Country of manufacture	United Kingdom
Product description	Panel connector intended for furniture construction and interior fittings
Material	Nylon PA6, 30% glass fill, Akromid B3 GK 30 (Fix) & Altech A 2030/109 (Button)
Harmonised Standards	There are no applicable EU Harmonised Standards for this product
Independent test reports	Sandberg LLP: 65275/M-A (16/07/2019) (available on website)
Guide loads	Four Type 1 Flush fasteners on a vertical panel will support loads weighing up to a maximum of 100kg (220lbs), provided that the screws and substrate are properly matched and all other installation instructions are complied with.
Web address	<a href="http://www.button-fix.com/products/button-fix-type-1-flush">www.button-fix.com/products/button-fix-type-1-flush</a>

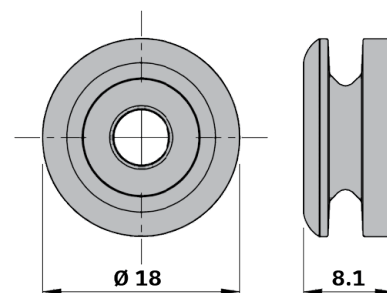


### Fix dimensions



Mass = 4.9 g

### Button dimensions



Mass = 1.4 g

Philip Hall, Technical Manager  
 London, October 2023

